



Thuraya Telecommunications Company

Thuraya Marine Quick Start Guide

November 2009

Revision 1

CONFIDENTIAL

COPYRIGHT © 2009 • THURAYA TELECOMMUNICATIONS COMPANY • ALL RIGHTS RESERVED

Legal Information - This document contains proprietary information and, except with written permission of Thuraya Telecommunications Company, such information shall not be published or disclosed to others, or used for any purpose and the document shall not be copied in whole or in part.

Table of Contents

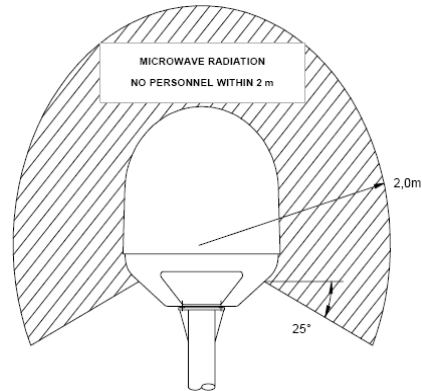
A.	SAFETY SUMMARY	3
1-	Microwave radiation hazards	3
2-	Ground the equipment	3
3-	Do not operate in an inflammable or combustibile environment	3
4-	Keep away from live circuits	3
5-	Do not service or adjust alone	3
B.	INSTALLATION	4
1-	SIM card Insertion	4
2-	Connecting the Main Unit to the Power Supply Adapter	4
3-	Wireless handset registration	5
C.	OPERATION	5
1-	Voice calls	5
i.	Making voice calls using wireless handset:	5
ii.	Making voice calls using an external telephone	5
iii.	Receiving voice calls:	6
2-	Fax calls using a G3 fax machine	6
i.	Sending Fax	6
ii.	Receiving fax calls	7
iii.	Recommended fax machines for ThurayaMarine	7
3-	GmPRS service access	7

A. SAFETY SUMMARY

The following general safety precautions must be observed during all phases of operation, service and repair of this equipment. Failure to comply with these precautions or with specific warnings elsewhere in this manual jeopardizes safety standards of design, manufacture and the intended use of this equipment. Thuraya assumes no liability for the customer's failure to comply with these requirements.

1- Microwave radiation hazards

During transmission the antenna in this system radiates microwave power. This radiation may be hazardous if exposed directly to humans in close vicinity to the antenna. During transmission, ensure that the recommended minimum safety distance is observed. The minimum safety distance to the antenna on the focal line, is 2 meters.



2- Ground the equipment

To minimize shock hazard, the equipment chassis and cabinet must be connected to an electrical ground.

3- Do not operate in an inflammable or combustible environment

Do not operate the equipment in the presence of flammable gasses or fumes. Operation of any electrical equipment in such an environment constitutes a definite hazard.

4- Keep away from live circuits

Operating personnel must not remove equipment covers. Component replacement and internal adjustment must be conducted by qualified maintenance personnel. Do not replace components while the power cable is connected to an electric supply. Under certain conditions, dangerous voltage may exist even when the power cable is disconnected. To avoid injuries, always disconnect power and discharge circuits before touching them.

5- Do not service or adjust alone

Do not attempt internal service or adjustments unless another person, capable of rendering first aid assistance, is present.

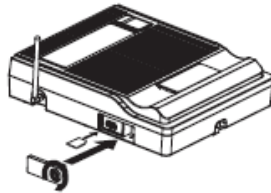
B. INSTALLATION

Please refer to section 3 on page 22 of Thuraya Marine User Guide for detailed installation instructions.

1- SIM card Insertion

Insert the Thuraya SIM card into the Main Unit to ensure normal operation.

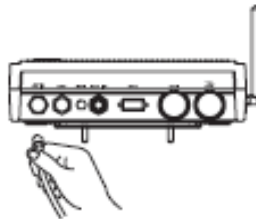
- a. Lift the SIM card cover from the left side of the Main Unit using the lock key.
- b. Insert the SIM card as shown in the illustration below.
- c. Close the SIM card cover.



2- Connecting the Main Unit to the Power Supply Adapter

Plug the power supply adapter connector into the DC-In connector on the main unit. Use the other end of the power supply adapter to connect the main unit to the main power source.

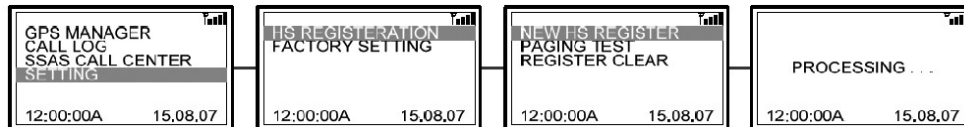
- a. Connect the DC plug for the AC/DC power adapter to the main unit.
- b. Connect the AC power to the external power source



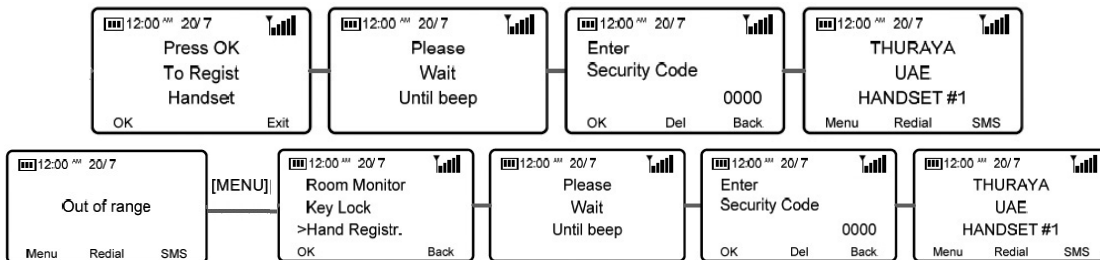
3- Wireless handset registration

The wireless handset should be registered at the main unit before using it. Typically, the handset is registered at the main unit during the manufacturing of ThurayaMarine. Please follow the following steps in case the wireless handset is showing “Out of range” on its display or “Press OK to Register Handset”:

- a. Select the “HS Registration” from the setting menu on the main unit.



- b. Press “OK” on the wireless handset. “Press OK if “Register Handset” is displayed or select “handset register” from menu if “Out of range” is displayed. Follow the steps of the following diagram.



C. OPERATION

1- Voice calls

To make calls, you must be connected to the network with an adequate SAT signal.

i. Making voice calls using wireless handset:

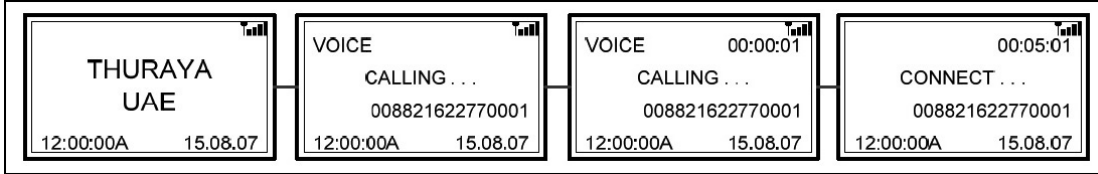
The Main Unit supports up to 4 wireless handset connections. Only one call can be processed at a time:

- a. Enter the phone number using the keypad.
- b. Press send key.

ii. Making voice calls using an external telephone

The Main Unit supports external telephone connections via theRJ-11 port.

- a. Enter the phone number using the keypad.
- b. Press “*”



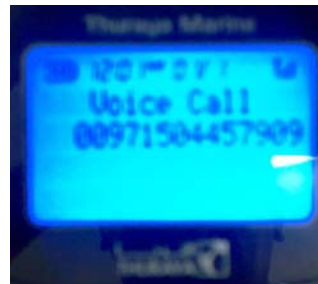
iii. Receiving voice calls:

To receive voice call using an external telephone via the RJ-11 port:

- a. Select the “Fax /Tel Select” in the Setting menu of the main unit. This setting is not required to receive calls using the wireless handset.
- b. Then select “Telephone Connect”.



Main Unit LCD Display when receiving Voice Call



Wireless Handset Display when receiving Voice Call

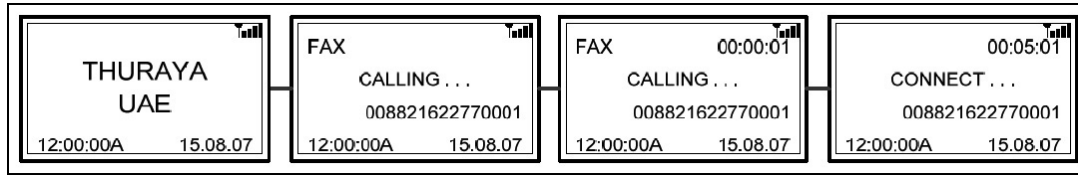
2- Fax calls using a G3 fax machine

You can use the main unit for receiving and sending fax messages. This can be done using a group 3 Fax machine connected to the RJ-11 interface. The recommended setup for the G3 fax machine should be as following:

- a. Setup ring delay on receive to one ring.
- b. Disable memory transmit in the transmit menu (this setting is recommended if multiple fax correspondences are transmitted consecutively).

i. Sending Fax

- a. Dial the destination number on the fax machine keypad followed by “#”.
- b. Press the fax “Start” button.



ii. Receiving fax calls

To receive a fax call using the RJ-11 port;

- a. Select the “Fax / Tel Select” in the Setting menu of the main unit. This setting is not required for sending Fax.
- b. Then Select “Fax Machine Connect”.



Main Unit LCD display when receiving fax call



Wireless handset display when receiving a fax call

iii. Recommended fax machines for ThurayaMarine

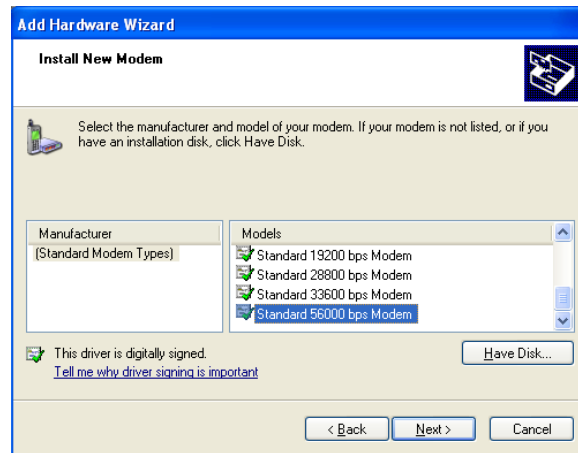
- a) Brother
 - 1- IntelliFax-2820
 - 2- IntelliFax-870MC
 - 3- FAX-827
 - 4- IntelliFax-2480C
 - 5- Fax – 1010e
- b) Panasonic KX-FP342
- c) Hewlett Packard (HP)
 - 1- PSC 2210 all-in-one

3- GmPRS service access

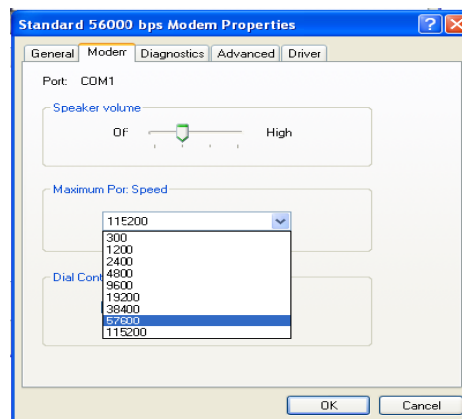
With the main unit, you can access Thuraya GmPRS. Use the USB port or DTE port to connect the main unit with your PC. The USB Windows XP driver is provided in the CD.

i. **Setting a modem to access Thuraya GmPRS.**

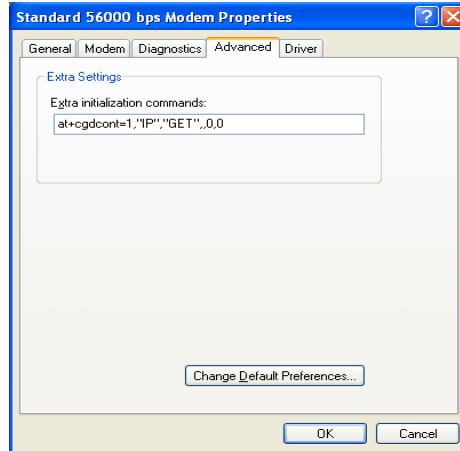
- a. On your PC, select “Control Panel→ Phone and Modem Option→ Modems” and then add the “**Standard 56000bps Modem**” according to the following procedures.



- b. Right-click the mouse on the “**Standard 56000bps Modem**” which is newly created in the modems window. Right-click the mouse to select “Properties” and then select “**57600**” as “Maximum Port Speed”.



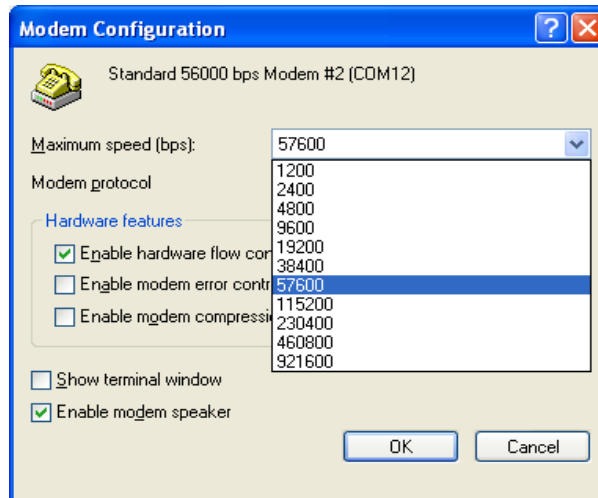
- c. Select Advanced Tab and enter “**at+cgdcont=1,IP,GET,,0,0**” to define the APN.



- d. Select “Control Panel → Network Connections → Create a new connection” Complete the new connection wizard by selecting the installed “**Standard 56000bps Modem**”. Also make sure to enter “***99#**” for phone number to dial.

Once all the settings are complete, a new icon for phone connection will be generated on the desktop.

- i. Double-click the newly generated phone connection icon to execute a phone connection. Select “Properties → General → Configure” and then set “**57600**” for “Maximum Modem Speed”.



- ii. Ensure that the main unit is connected to your PC before starting the connection you just created.